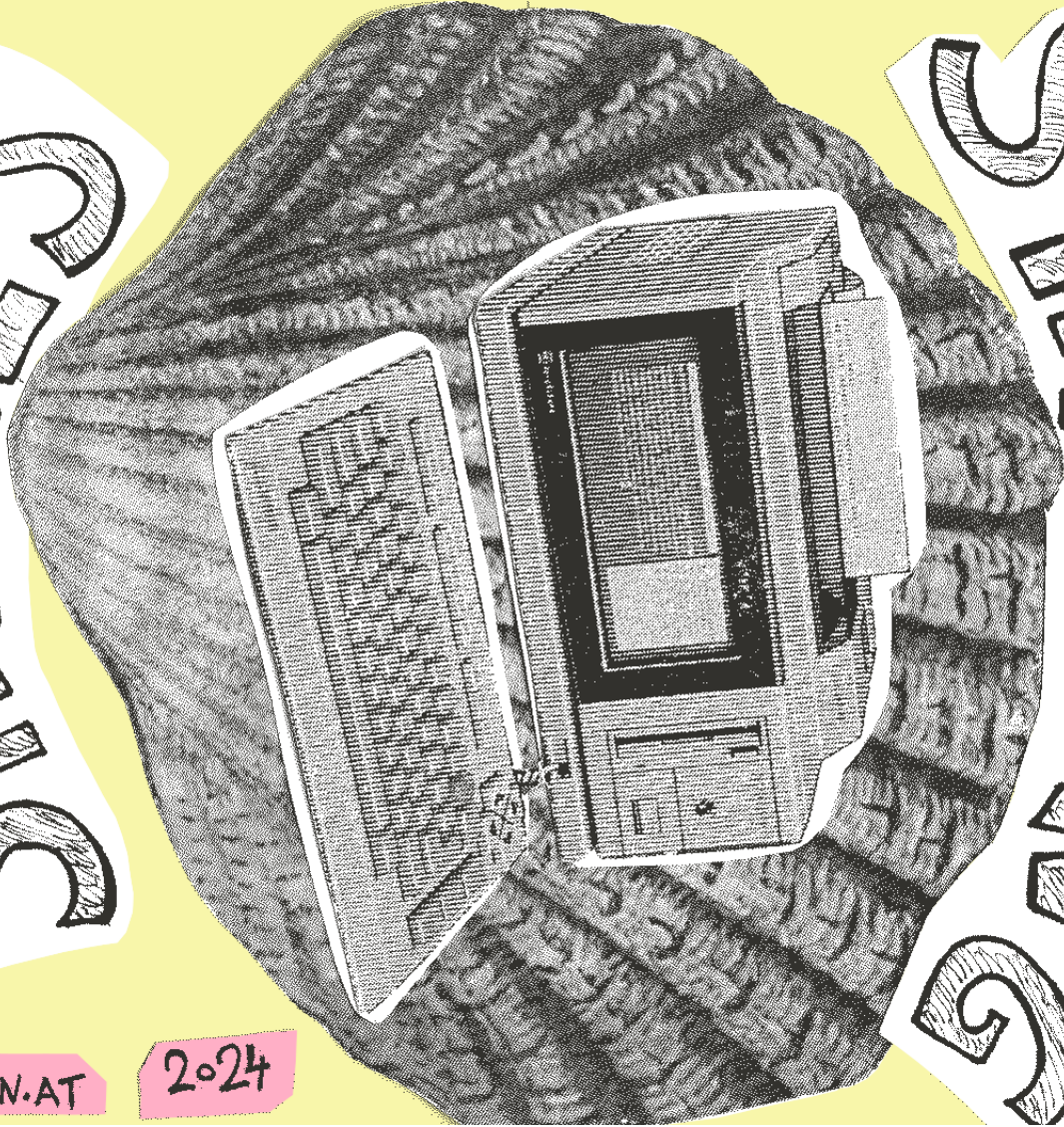


SHALLS

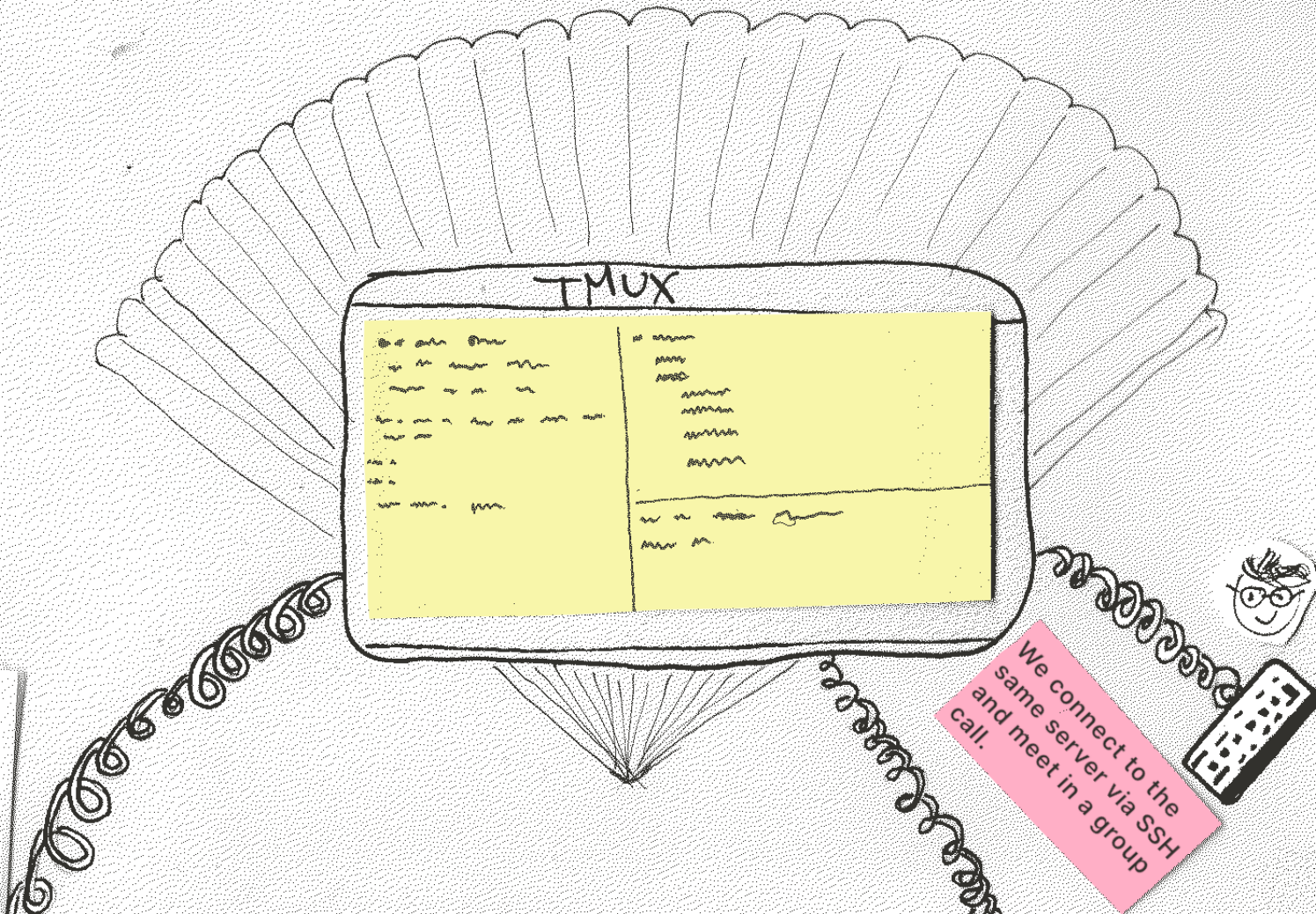
SHARRING



DIEBIN.AT

2024

find this ZINE online at <https://sharingshells.diebin.at>

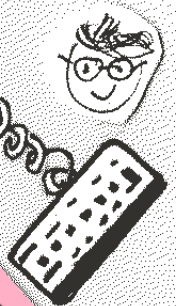


# TMUX

```
ls -lah /etc
ls -lah /etc/passwd
ls -lah /etc/shadow
ls -lah /etc/crontab
ls -lah /etc/cron.d
ls -lah /etc/cron.daily
ls -lah /etc/cron.hourly
ls -lah /etc/cron.monthly
ls -lah /etc/cron.weekly
ls -lah /etc/cron.weekly/

ls -lah /etc/crontab
ls -lah /etc/cron.d
ls -lah /etc/cron.daily
ls -lah /etc/cron.hourly
ls -lah /etc/cron.monthly
ls -lah /etc/cron.weekly
```

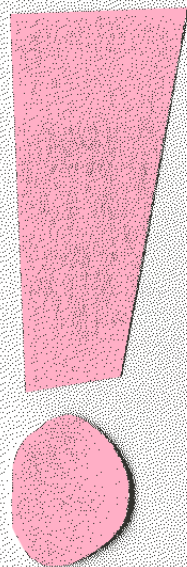
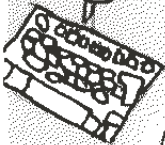
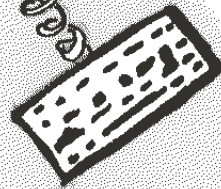
We connect to the same server via SSH and meet in a group call.



We are a feminist server collective and we don't live in the same place.

Nevertheless, we found a way to care for our servers together, as if we were sitting in front of the same screen.

**TMLX**



## Using `tmux` together can look something like this:

```
1  
2  
3  
4 |---|---|---|---|---|---|---|---|  
5 |---|---|---|---|---|---|---|---|  
6 |---|---|---|---|---|---|---|---|  
7 |---|---|---|---|---|---|---|---|  
8 |---|---|---|---|---|---|---|---|  
9  
10  
11  
12  
13  
14  
15 A text document we are working on...  
16  
17  
18  
19  
20  
21  
...  
...  
...  
...  
...  
...  
...  
...  
...  
...  
... This takes ages...  
mafalda@diebin:~$
```

pid	user	ppid	priv	vsize	rss	swap	cpus
0							0.7%
1							2.0%
2							0.0%
3							0.7%
4							2.6%
5							1.3%
6							1.3%
7							0.0%

```
Mem[ ] | | | | 3.58G/15.3G  
Swp[ ] | | | 0K/2.00G  
Tasks: 152, 645 thr;  
Load average: 0.23 0.  
Uptime: 07:51:59
```

pid	user	ppid	priv	vsize	rss	swap	cpus						
F1	help	F2	setup	F3	search	F4	local	F5	log	F6	search	F7	...

```
Here we started a longer running process...  
...  
...  
...  
...  
... This takes ages...  
mafalda@diebin:~$
```

→ Different programs can be running in various panes.

← There is just 1 cursor, we are taking turns typing.

TMUX is a ...

# TERMINAL MULTIPLEXER

... like a terminal with  
SUPERPOWERS!

Several people can use it at the same time  
+ it lives for a longer time

a command-line program, we start  
via a ssh connection on  
our server

The `tmux` session "lives" on the  
server: even if we all cut our  
connection, we can later come back  
to continue in the same session.

We take turns with  
typing and all of us  
can see the same  
terminal.

Even with bad internet  
connections we don't  
lose what we are  
working on so easily

# Variant 1: Everybody connects to the same socket

One of us creates the socket, and makes it accessible for the others:

```
tmux -S /tmp/party_socket new -s party_session  
chmod 777 /tmp/party_socket
```

... and the others join:

```
tmux -S /tmp/party_socket attach -t party_session
```

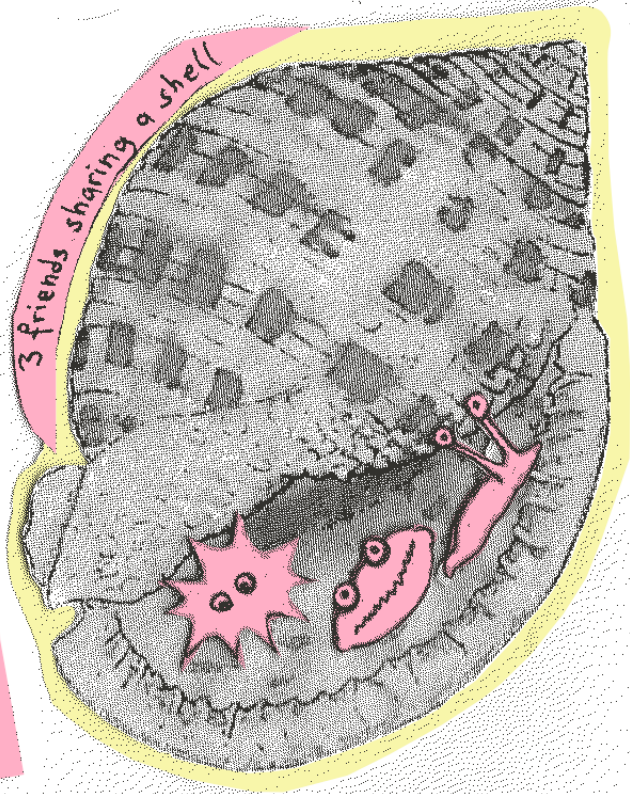
## Variant 2: Everyone logs in as the same user

The first one starts a session from the shared account:

```
sudo -iu party-user  
tmux
```

The others join the session from the shared account:

```
sudo -iu party-user  
tmux a
```



Two settings for the CONFIG, we found to be helpful

echo

```
"set -g window-size smallest" 50000  
"set -g history-limit 50000"
```

```
/etc/tmux.conf
```

>>

# CHEAT SHEET

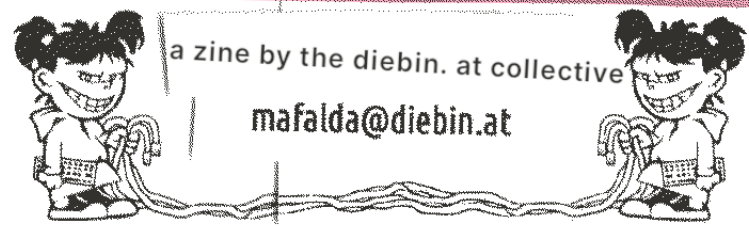
```
tmux new -s party_session  
# start a new session
```

```
tmux attach -t party_session  
# join an existing session
```

CTRL + B then D  
# leave a session

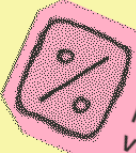
```
tmux ls  
# list all running sessions
```

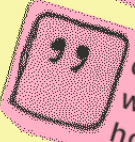
```
tmux kill-session -t party_session  
# end a session
```

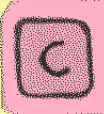


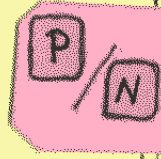
To give TMUX a command, we first press CTRL + B to enter "Command Mode" & then another key, depending on what we wanna do



STRG + B  
"Command Mode"

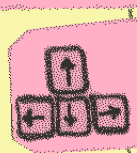
 divides the pane vertically


 divides the window horizontally

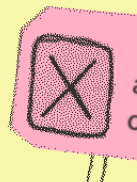
 opens a new window

 changes to the previous/next window

  changes to "copy mode" for scrolling, exit with Q

 navigates between panes

 switches the active pane to "fullscreen"

 closes the active pane, confirm with Y

 detaches from the active session without closing it